

NOTE: 1  
 DESIGN CODE:  
 API 17H

NOTE: 2  
 TECHNICAL CLASSIFICATION:  
 Article Type: 008-Actuation  
 Main Group: 8.03. ISO-6-7 Actuation  
 Intermediate Group: 8.46.03. Gear  
 Sub Group: 8.46.128.02. Intervention

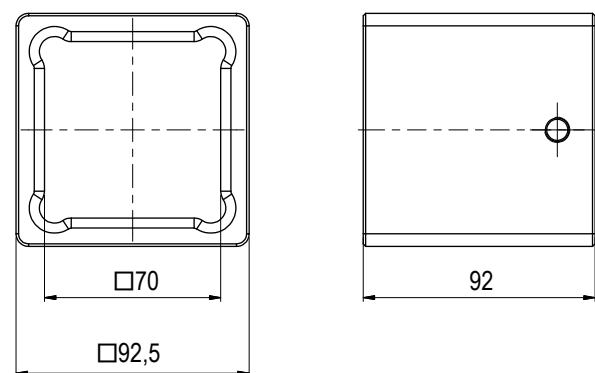
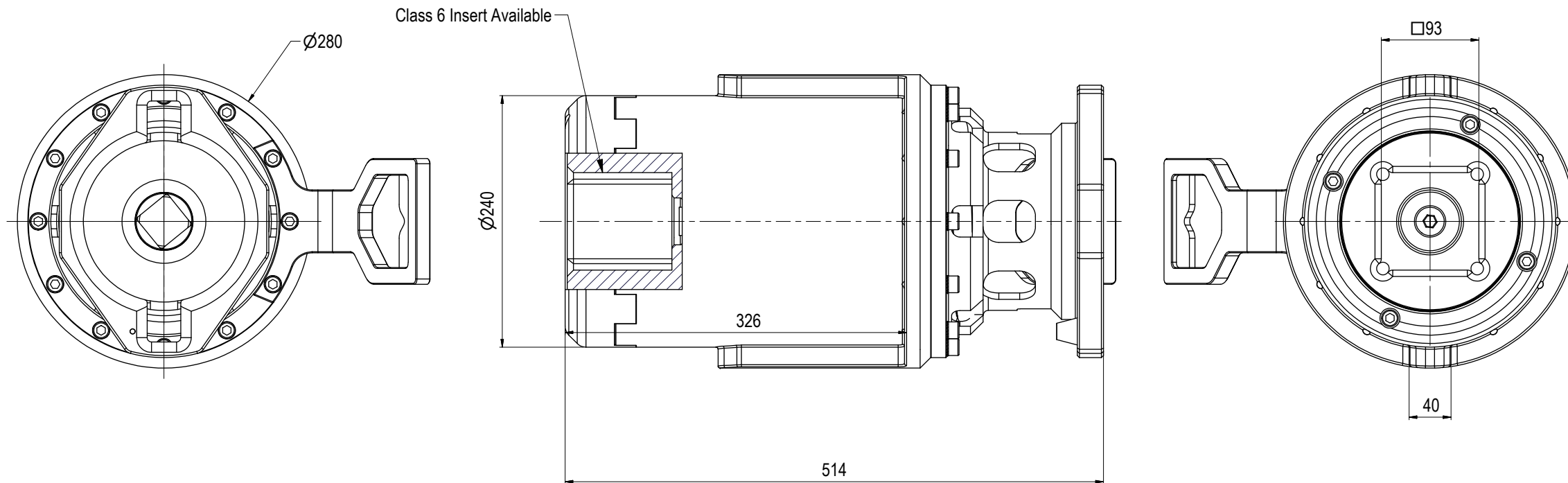
NOTE: 3  
 INTERFACE INFORMATION:  
 Pressure Rating Bar: 300  
 Design Water Depth: 3000m  
 Material: N/A  
 Weight in Air: 62,7 kg  
 Volume: 12,83 dm<sup>3</sup>  
 Submerged Weight: 49,59 kg  
 Surface Area: 26052 cm<sup>2</sup>  
 Hydraulic: N/A  
 Mechanical: ISO Class 4 Input  
 Electrical: N/A  
 Com. & Protocol: N/A

NOTE: 4  
 ADDITIONAL INFORMATION:  
 API 17H Class 4 to 7 gearbox for short term use / intervention.  
 The gearbox is oil filled and pressure compensated using passive, integrated compensator. Main housing constructed in hard anodized Aluminum, nose section in POM and output socket in S165M.

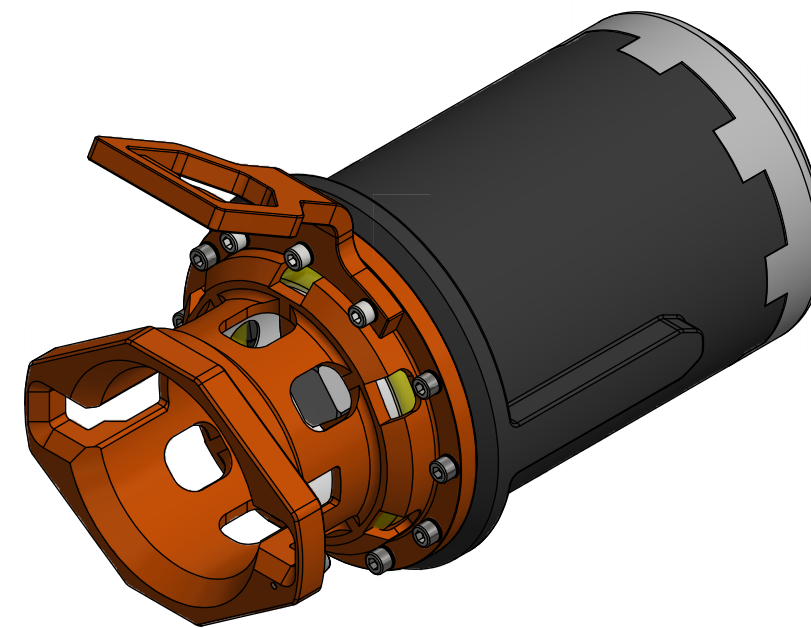
Mechanical Gear box with ISO Class 4 input and ISO Class 7 output. 15kNm torque capacity.  
 Gear Ratio 15kNm 1:6

Can be configured to 10kNm and 40kNm torque output.  
 Gear Ratio 10kNm 1:3,78 (ref BA8497)  
 Gear Ratio 40kNm 1:14.273 (ref BA6403)

Gear Ratio 40kNm Long 1:14.273 (ref BB1677)



CLASS 6 INSERT BB1680



|      |            |                        |                 |      |       |       |
|------|------------|------------------------|-----------------|------|-------|-------|
| 11   | 11.11.2024 | 9-IFU (Issued for Use) |                 | WTJ  | TAN   | WTJ   |
| 10   | 20.9.2023  | 9-IFU (Issued for Use) |                 | WTJ  | LGH   | WTJ   |
| 09   | 24.8.2022  | 9-IFU (Issued for Use) |                 | WTJ  | LGH   | WTJ   |
| 08   | 11.2.2022  | 9-IFU (Issued for Use) |                 | WTJ  | KHA   | WTJ   |
| Rev. | Date       | Reason for issue       | Revision change | Made | Chk'd | Appr. |



Dwg Scale:  
 NTS  
 Dwg Proj:  
 Dwg Format:  
 A3

Drawing title:  
 Class 7 Gear Box 15kNm

Drawing number:  
 BA6847

Rev.  
 11